



ZBOX



**G\*GRASS®**

## ZBOX DRAWER SYSTEM

The proven Zargen metal drawer system coupled with a full extension precision ball bearing slide provides a new twist on drawer box construction.





**G\* GRASS®**

**G\* GRASS®**



ZBox! A metal drawer system combining Zargen drawer sides with Ball Bearing slides for an innovative drawer system.

**Innovative functional solutions.**

For years the Zargen metal drawer system has provided cabinet makers the quality, functionality, and versatility expected of Grass hardware. Now Grass is offering all the same features of the Zargen system but with one new twist—Zargen mounted to a Ball Bearing slide.

Introducing ZBox. ZBox offers full extension standard drawers and deep drawers, a railing system, and Pendaflex filing systems. Discover the endless possibilities with Grass ZBox.





ZBox... Zargen with a twist! Made from steel, gliding on a bed of ball bearings. Strong, durable, and reliable.

**Flexibility to the most demanding design needs.**

If necessity is the mother of invention, Grass is the father of innovation. One idea has grown into a state of the art product that fills the needs of a growing market.

Grass introduces ZBox. Assemble a Zargen drawer side with a Grass full extension ball bearing drawer slide to create a full extension metal drawer - ZBox. The combined strength of the ball bearing slides with the Zargen's steel construction offers a drawer solution that saves time and money with its quick drawer box construction and simple installation.

Three heights and five lengths provide a wide range of possibilities for your cabinet construction.

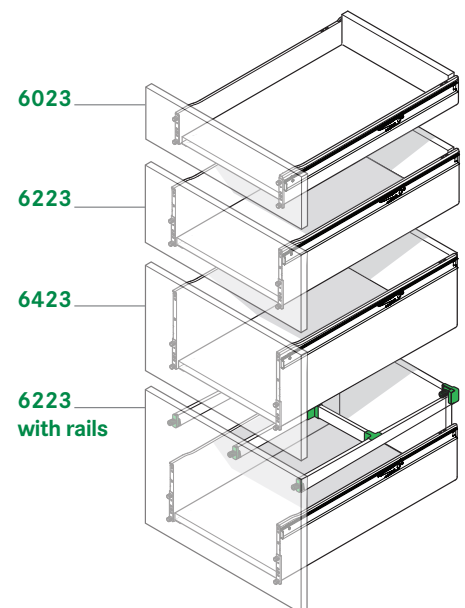


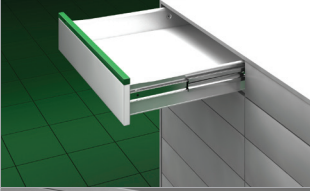

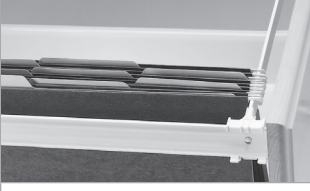
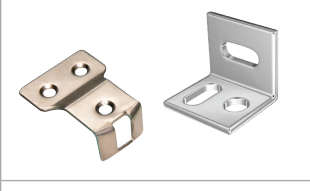



Table of Content

	Description	Page
	<b>Features and Benefits</b>	6
	<b>Technical Information</b>	8
	<p><b>ZBox 6423</b></p> <ul style="list-style-type: none"> <li>• 213mm (8 3/8") side height</li> <li>• Integrated drawer slide and side</li> <li>• Full Extension</li> </ul>	10
	<p><b>ZBox 6223</b></p> <ul style="list-style-type: none"> <li>• 149mm (5 7/8") side height</li> <li>• Integrated drawer slide and side</li> <li>• Full Extension</li> </ul>	12
	<p><b>ZBox 6023</b></p> <ul style="list-style-type: none"> <li>• 85mm (3 3/8") side height</li> <li>• Integrated drawer slide and side</li> <li>• Full Extension</li> </ul>	14
	<p><b>6100 Railing System</b></p> <ul style="list-style-type: none"> <li>• Railing System for Zargen and ZBox slides</li> </ul>	16
	<p><b>Pendaflex File Railing</b></p> <ul style="list-style-type: none"> <li>• Three file systems available</li> <li>• Easy to construct</li> </ul>	17
	<p><b>Accessories</b></p>	19
	<p><b>Machinery</b></p> <ul style="list-style-type: none"> <li>• Grass Pro1                             <ul style="list-style-type: none"> <li>• Boring and insertion machine</li> <li>• Functional design</li> <li>• Easy maintenance</li> </ul> </li> <li>• ZRam                             <ul style="list-style-type: none"> <li>• For drawer assembly</li> <li>• Activated by air</li> <li>• For ZBox and Zargen assembly</li> </ul> </li> </ul>	20

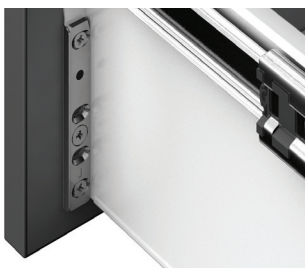
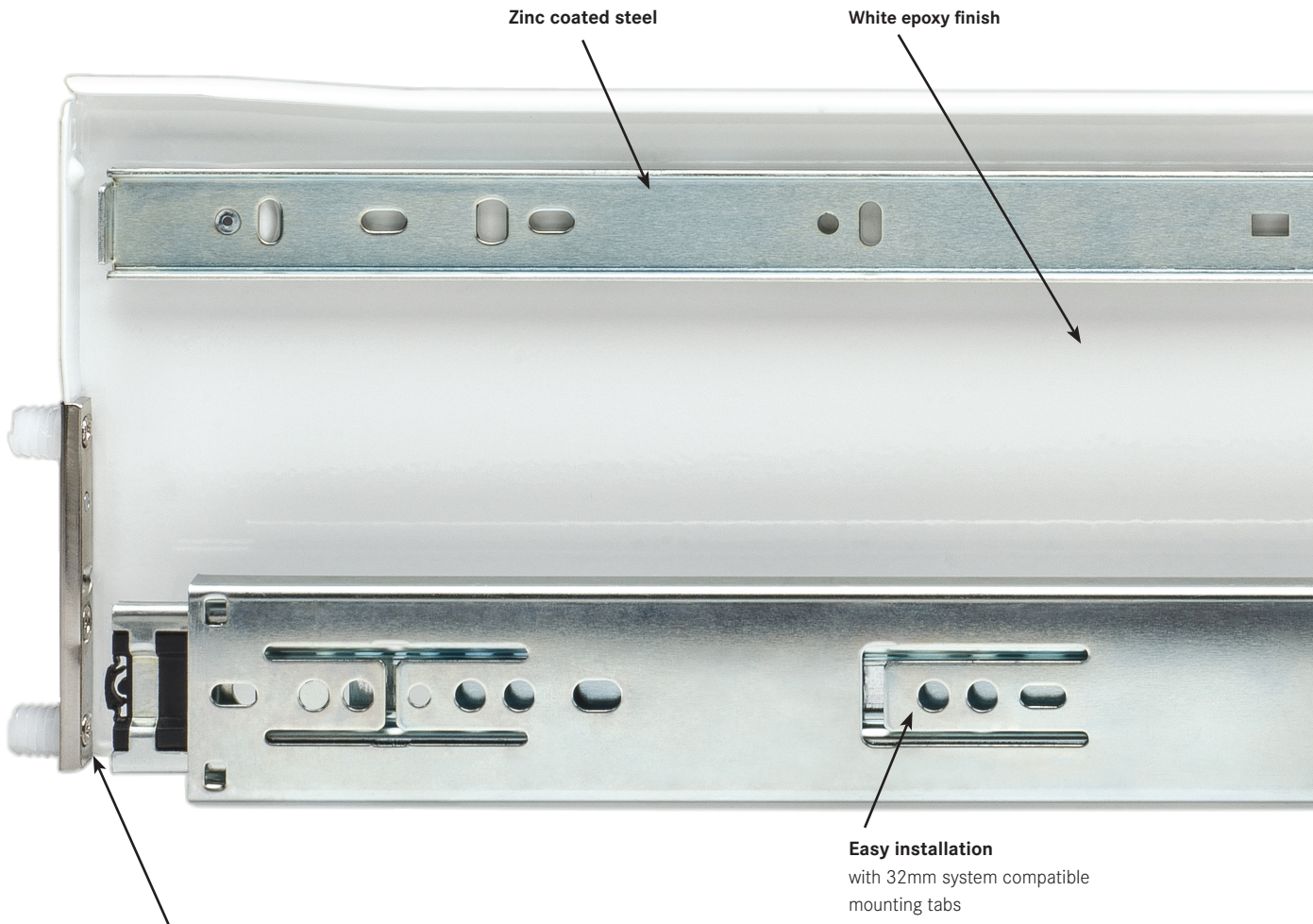
# Features and Benefits

## ZBox

### Features



- Integrated side mount ball bearing drawer slide and metal drawer side
- Ball bearing telescopic full extension
- Hold-in detent ensures drawers stay closed
- Easy lever disconnect for removal of drawer box from cabinet member
- Drawer side - white epoxy finish; Drawer slide - zinc coated steel
- Load capacity: 100 lb dynamic, 100 lb static
- Adjustments: Cam Height  $\pm 2\text{mm}$ , Side  $\pm 1.5\text{mm}$
- Zargen is made in the USA, ZBox is assembled in the USA



#### Adjustment via integrated front fixing bracket

Height adjustment  $\pm 2\text{mm}$   
Side adjustment  $\pm 1.5\text{mm}$

ZBox combines the performance of ball bearing smoothness with the strength and adjustability of the Zargen Drawer System. A combination backed by GRASS.

## Features

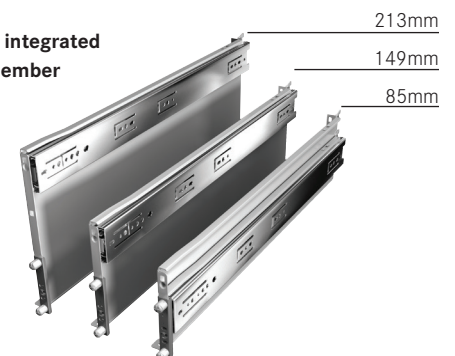
- Frameless or face frame application
- Zargen side: white epoxy finish
- Ball bearing slide: zinc coated steel
- Front slotted hole for face frame mounting
- Continuous bearings ensure smooth running performance
- Manufactured from cold rolled steel
- Face frame rear mounting bracket available
- Meets and exceeds ANSI/BHMA A156.9 Grade 1 testing requirements

Release lever for easy drawer removal

Suitable for face frame and frameless cabinets



Three drawer heights with integrated drawer side and cabinet member



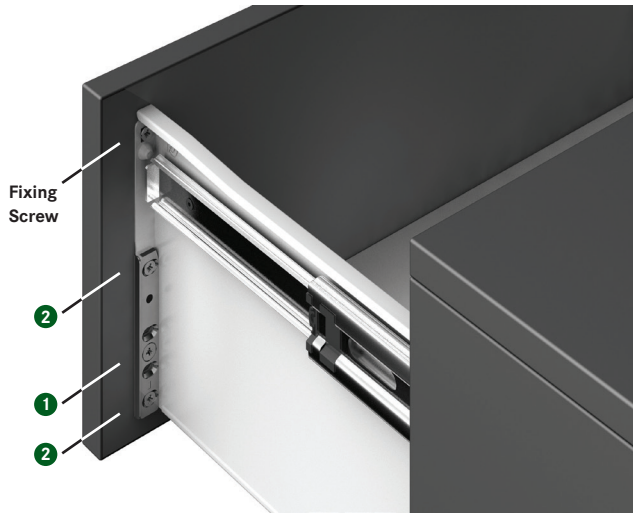
# Technical Information

## ZBox

### Adjustment Features 6423, 6223

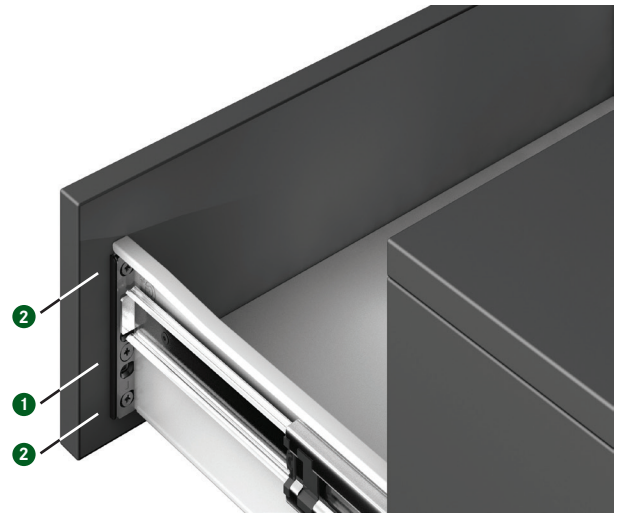
- 1 Height Adjustment: Loosen screws 2 slightly. Adjust screw 1 (adjustment  $\pm 2\text{mm}$ ). Tighten screws 2.
- 2 Side Adjustment: Loosen screws 2 slightly. Adjust front to required position (adjustment range  $\pm 1.5\text{mm}$ ). Tighten screws 2.

After adjusting front panel, mount fixing screw



### Adjustment Features 6023

- 1 Height Adjustment: Loosen screws 2 slightly. Adjust screw 1 (adjustment  $\pm 2\text{mm}$ ). Tighten screws 2.
- 2 Side Adjustment: Loosen screws 2 slightly. Adjust front to required position (adjustment range  $\pm 1.5\text{mm}$ ). Tighten screws 2.



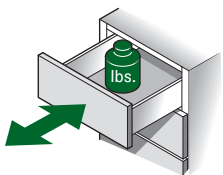
### System Organization

A unique feature of the ZBox System is its universal adaptability to Zargen Accessories. The 6100 railing system offers function, drawer space utilization, and economy.

#### Drawer with railing 6 100



### Weight Capacities per Pair of Slides



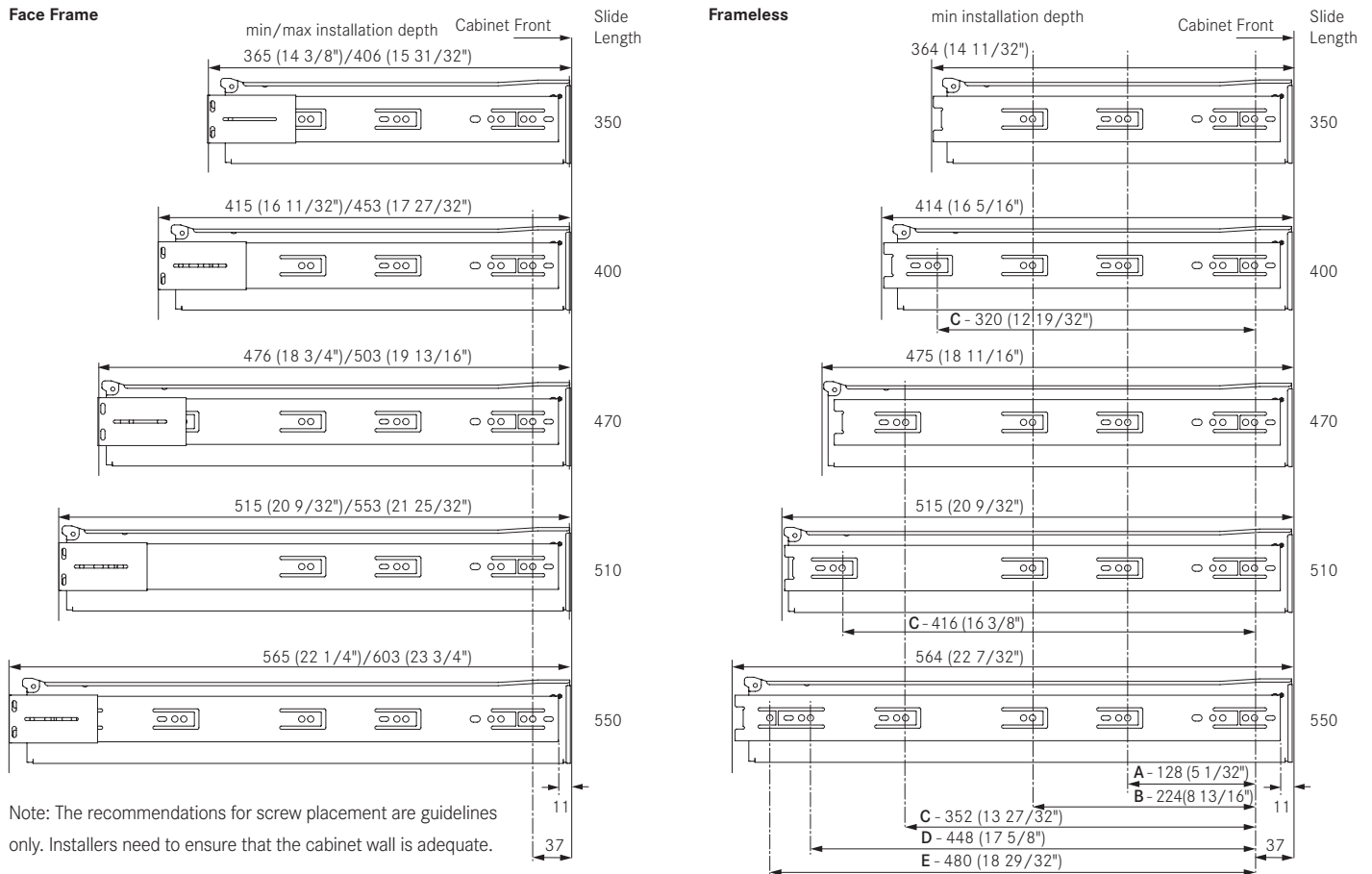
ZBox: 100 lb dynamic load rating, 100 lb static load rating

ZBox meets and exceeds the minimum requirements of ANSI/BHMA A156.9 standard, Grade 1



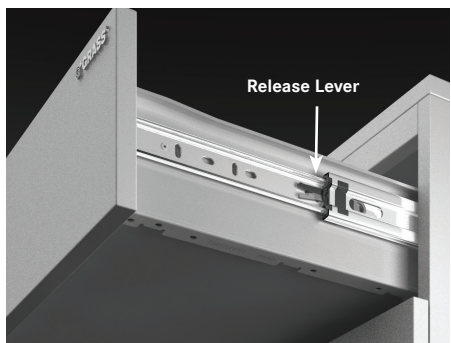
## ZBox

### Cabinet Boring Specifications

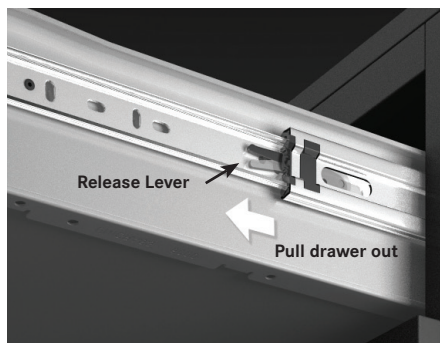


Slide Length	Slide Travel	Screw Hole Locations					Face Frame		Frameless
		A	B	C	D	E	Min	Max	Min
350 (13 3/4")	350	128	224	-	-	-	365 (14 3/8")	406 (15 31/32")	364 (14 11/32")
400 (15 3/4")	400	128	224	320	-	-	415 (16 11/32")	453 (17 27/32")	414 (16 5/16")
470 (18 1/2")	450	128	224	352	-	-	476 (18 3/4")	503 (19 13/16")	475 (18 11/16")
510 (20 1/16")	500	128	224	416	-	-	515 (20 9/32")	553 (21 25/32")	515 (20 9/32")
550 (21 5/8")	550	128	224	352	448	480	565 (22 1/4")	603 (23 3/4")	564 (22 7/32")

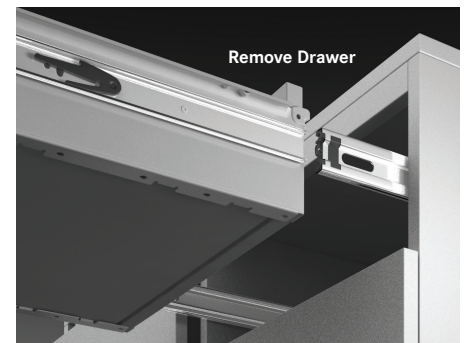
### Removing the Drawer



Pull out drawer to expose the release lever mechanism



Easy Release Lever:  
Right Side - push down; Left Side - push up  
Pull out the drawer



Remove drawer

# ZBox 6423

## 213mm (8 3/8") Side Height



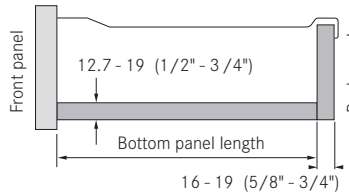
- Integrated side mount ball bearing drawer slide and metal drawer side
- Ball bearing telescopic full extension
- Hold-in detent ensures drawers stay closed
- Easy lever disconnect for removal of drawer box from cabinet member
- Drawer side – white epoxy finish; Drawer slide – zinc coated steel
- Load capacity: 100 lb dynamic, 100 lb static
- Adjustments: Cam Height  $\pm 2\text{mm}$ , Side  $\pm 1.5\text{mm}$
- Zargen made in the USA, ZBox assembled in USA

### ZBox 6423 Full Extension Slide, 100 lbs

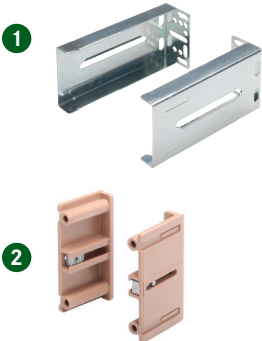


Description	Drawer Length	Item No.	PU
ZBox 6423/350	350 (13 3/4")	30078-03	5
ZBox 6423/400	400 (15 3/4")	30079-03	5
ZBox 6423/470	470 (18 1/2")	30080-03	5
ZBox 6423/510	510 (20 1/16")	30081-03	5
ZBox 6423/550	550 (21 5/8")	30083-03	5

Slide Length	Bottom Panel Length		Extension
	16mm (5/8") Back Panel	19mm (3/4") Back Panel	
350 (13 3/4")	331 (13 1/16")	328 (12 15/16")	350 (13 3/4")
400 (15 3/4")	381 (15")	378 (14 7/8")	400 (15 3/4")
470 (18 1/2")	451 (17 3/4")	448 (17 5/8")	450 (17 3/4")
510 (20 1/16")	491 (19 5/16")	488 (19 3/16")	500 (19 11/16")
550 (21 5/8")	531 (20 7/8")	528 (20 13/16")	550 (21 5/8")

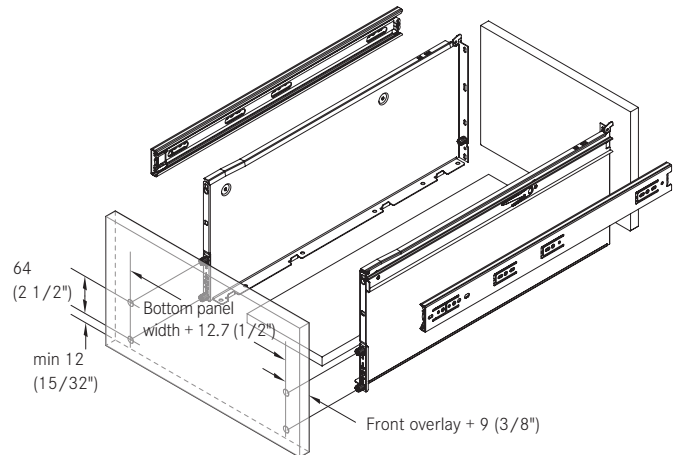


### Face Frame Brackets



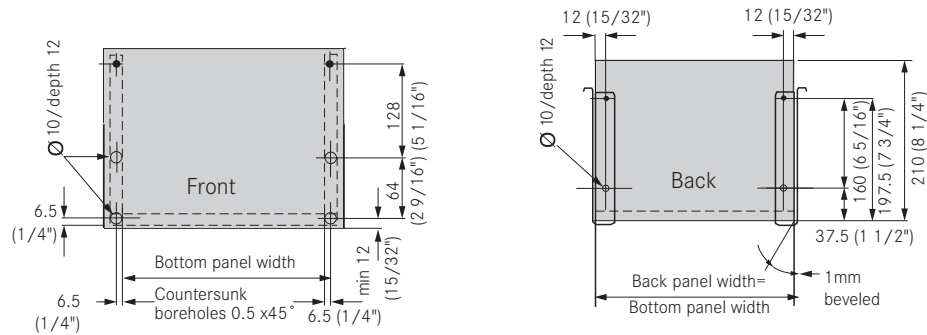
Description	Item No.	PU
1 Face frame rear mount bracket	30102-15	100
2 Inset bracket set*	13901-37	1
Inset bracket set*	13901-08	50

\*See page 19 for installation instructions.

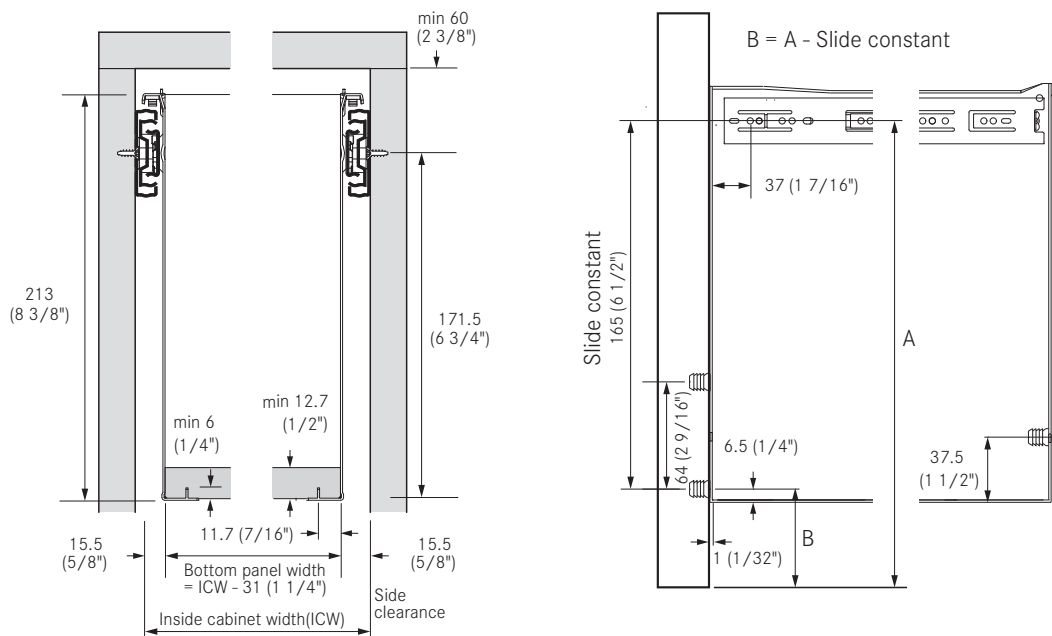


PU – Packaging unit

## Drawer Back and Bottom Measurements



## Drawer Installation Measurements



## Face Frame Installation

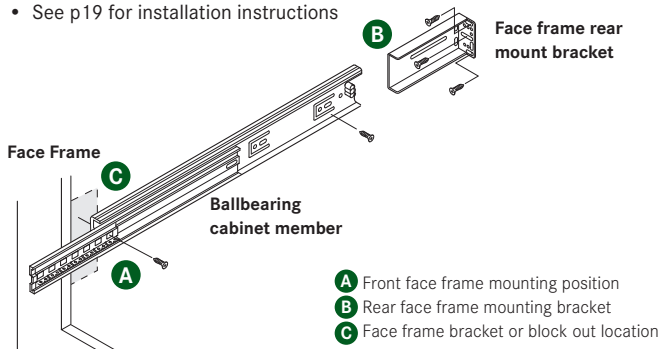
For Face Frame Cabinetry Use:

### Back

- Attach face frame rear mounting brackets (Item # 30102-15) to slide

### Front - Setback=37mm

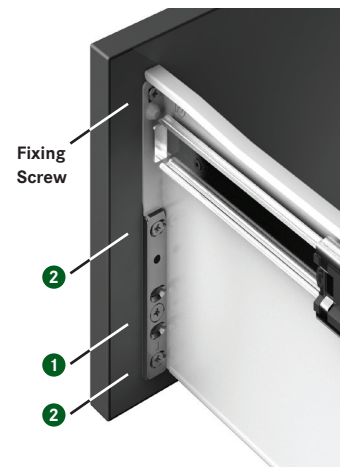
- Use Inset bracket (Item # 13901-37) or
- Block out the face frame
- See p19 for installation instructions



## Adjustment Features 6423, 6223

- Height Adjustment:**  
Loosen screws 2 slightly  
Adjust screw 1 (adjustment  $\pm 2$ mm).  
Tighten screws 2.
- Side Adjustment:**  
Loosen screws 2 slightly.  
Adjust front to required position (adjustment range  $\pm 1.5$ mm).  
Tighten screws 2.

After adjusting front panel, mount fixing screw.



# ZBox 6223

## 149mm (5 7/8") Side Height



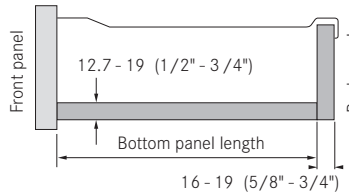
- Integrated side mount ball bearing drawer slide and metal drawer side
- Ball bearing telescopic full extension
- Hold-in detent ensures drawers stay closed
- Easy lever disconnect for removal of drawer box from cabinet member
- Drawer side – white epoxy finish; Drawer slide – zinc coated steel
- Load capacity: 100 lb dynamic, 100 lb static
- Adjustments: Cam Height  $\pm 2\text{mm}$ , Side  $\pm 1.5\text{mm}$
- Zargen made in the USA, ZBox assembled in USA

### ZBox 6223 Full Extension Slide, 100 lbs

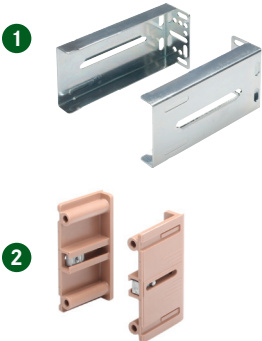


Description	Drawer Length	Item No.	PU
ZBox 6223/350	350 (13 3/4")	30073-03	5
ZBox 6223/400	400 (15 3/4")	30074-03	5
ZBox 6223/470	470 (18 1/2")	30075-03	5
ZBox 6223/510	510 (20 1/16")	30076-03	5
ZBox 6223/550	550 (21 5/8")	30077-03	5

Slide Length	Bottom Panel Length		Extension
	16mm (5/8") Back Panel	19mm (3/4") Back Panel	
350 (13 3/4")	331 (13 1/16")	328 (12 15/16")	350 (13 3/4")
400 (15 3/4")	381 (15")	378 (14 7/8")	400 (15 3/4")
470 (18 1/2")	451 (17 3/4")	448 (17 5/8")	450 (17 3/4")
510 (20 1/16")	491 (19 5/16")	488 (19 3/16")	500 (19 11/16")
550 (21 5/8")	531 (20 7/8")	528 (20 13/16")	550 (21 5/8")

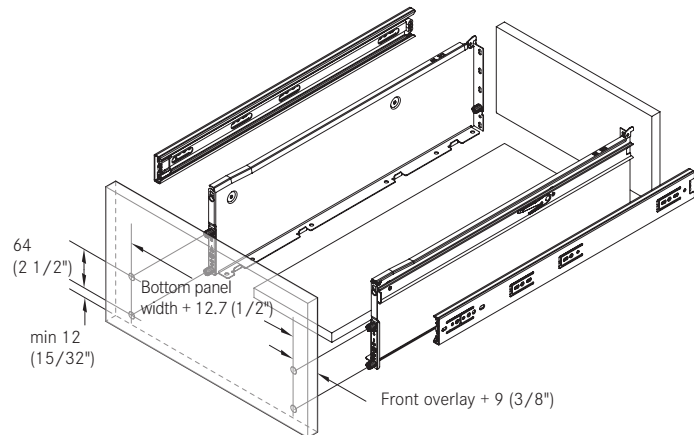


### Face Frame Brackets



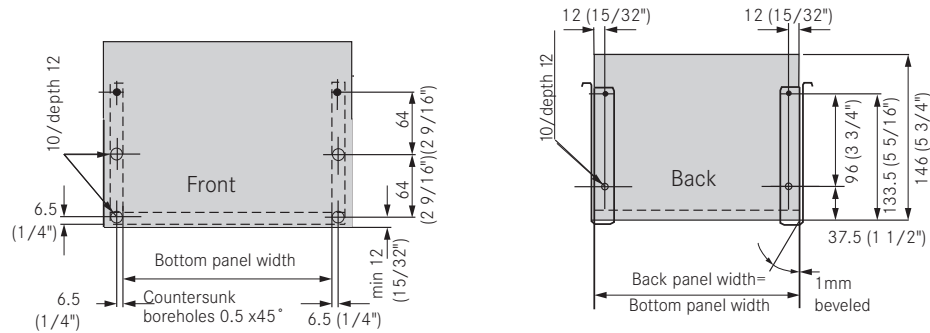
Description	Drawer Length	Item No.	PU
1 Face frame rear mount bracket		30102-15	100
2 Inset bracket set*		13901-37	1
Inset bracket set*		13901-08	50

\*See page 19 for installation instructions.

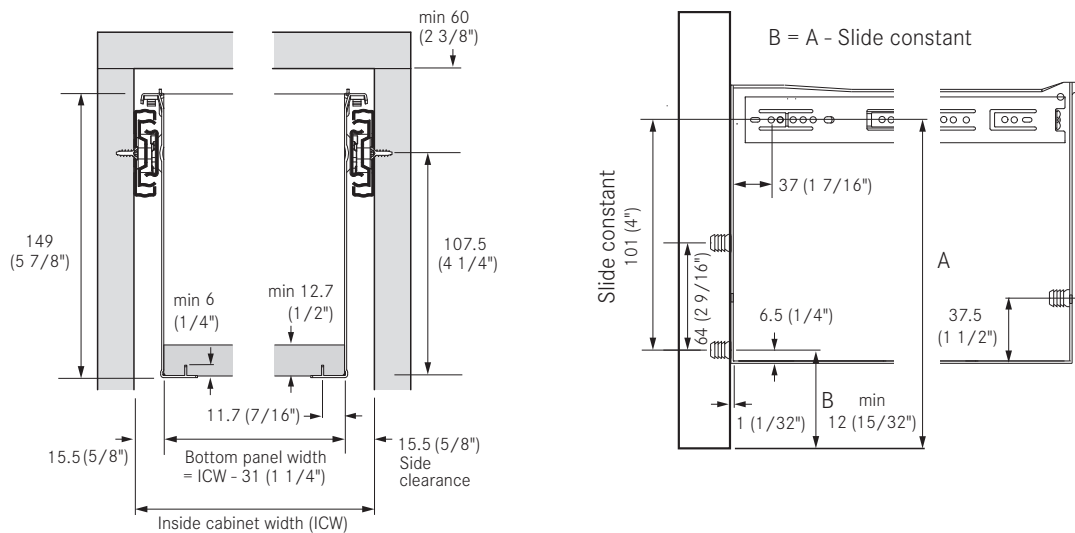


PU – Packaging unit

## Drawer Back and Bottom Measurements



## Drawer Installation Measurements



## Face Frame Installation

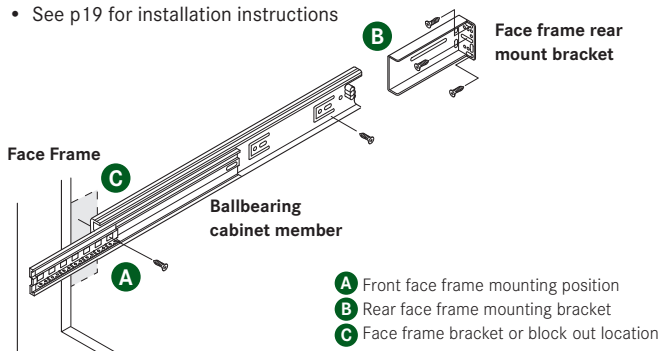
For Face Frame Cabinetry Use:

### Back

- Attach face frame rear mounting brackets (Item # 30102-15) to slide

### Front - Setback=37mm

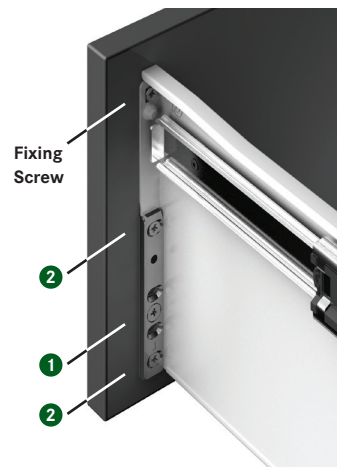
- Use Inset bracket (Item # 13901-37) or
- Block out the face frame
- See p19 for installation instructions



## Adjustment Features 6423, 6223

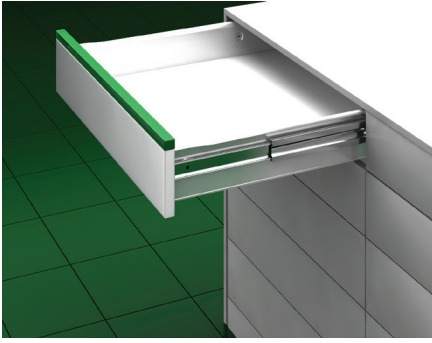
- Height Adjustment:**  
Loosen screws 2 slightly  
Adjust screw 1 (adjustment  $\pm 2\text{mm}$ ).  
Tighten screws 2.
- Side Adjustment:**  
Loosen screws 2 slightly.  
Adjust front to required position (adjustment range  $\pm 1.5\text{mm}$ ).  
Tighten screws 2.

After adjusting front panel, mount fixing screw.



# ZBox 6023

## 85mm (3 3/8") Side Height



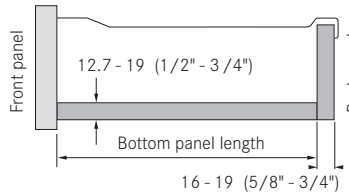
- Integrated side mount ball bearing drawer slide and metal drawer side
- Ball bearing telescopic full extension
- Hold-in detent ensures drawers stay closed
- Easy lever disconnect for removal of drawer box from cabinet member
- Drawer side – white epoxy finish; Drawer slide – zinc coated steel
- Load capacity: 100 lb dynamic, 100 lb static
- Adjustments: Cam Height  $\pm 2\text{mm}$ , Side  $\pm 1.5\text{mm}$
- Zargen made in the USA, ZBox assembled in USA

### ZBox 6023 Full Extension Slide, 100 lbs

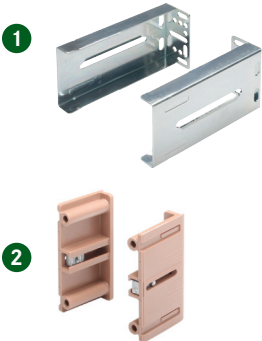


Description	Drawer Length	Item No.	PU
ZBox 6023/350	350 (13 3/4")	30063-03	5
ZBox 6023/400	400 (15 3/4")	30064-03	5
ZBox 6023/470	470 (18 1/2")	30065-03	5
ZBox 6023/510	510 (20 1/16")	30066-03	5
ZBox 6023/550	550 (21 5/8")	30067-03	5

Slide Length	Bottom Panel Length		Extension
	16mm (5/8") Back Panel	19mm (3/4") Back Panel	
350 (13 3/4")	331 (13 1/16")	328 (12 15/16")	350 (13 3/4")
400 (15 3/4")	381 (15")	378 (14 7/8")	400 (15 3/4")
470 (18 1/2")	451 (17 3/4")	448 (17 5/8")	450 (17 3/4")
510 (20 1/16")	491 (19 5/16")	488 (19 3/16")	500 (19 11/16")
550 (21 5/8")	531 (20 7/8")	528 (20 13/16")	550 (21 5/8")

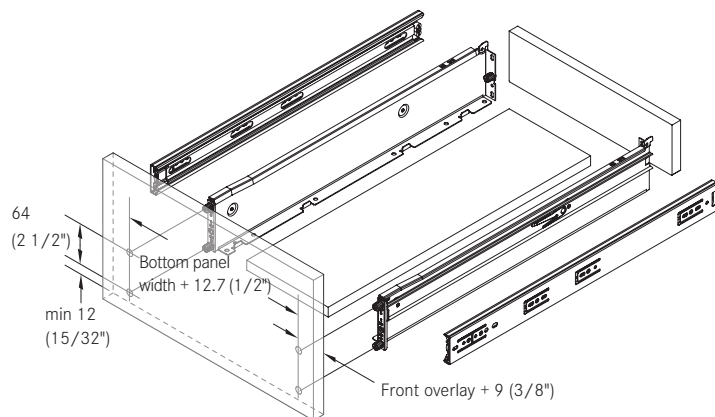


### Face Frame Brackets



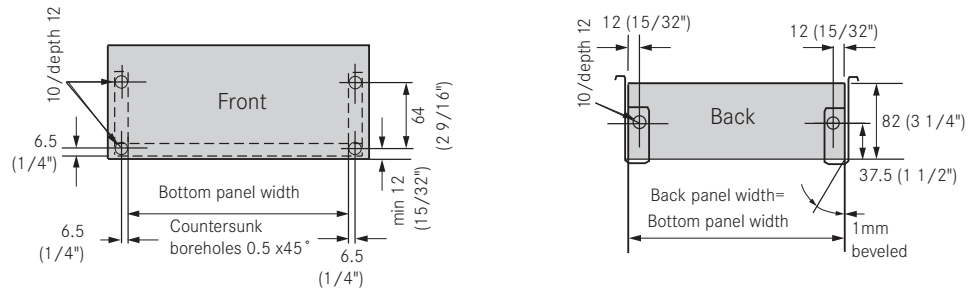
Description	Item No.	PU
1 Face frame rear mount bracket	30102-15	100
2 Inset bracket set*	13901-37	1
Inset bracket set*	13901-08	50

\*See page 19 for installation instructions.

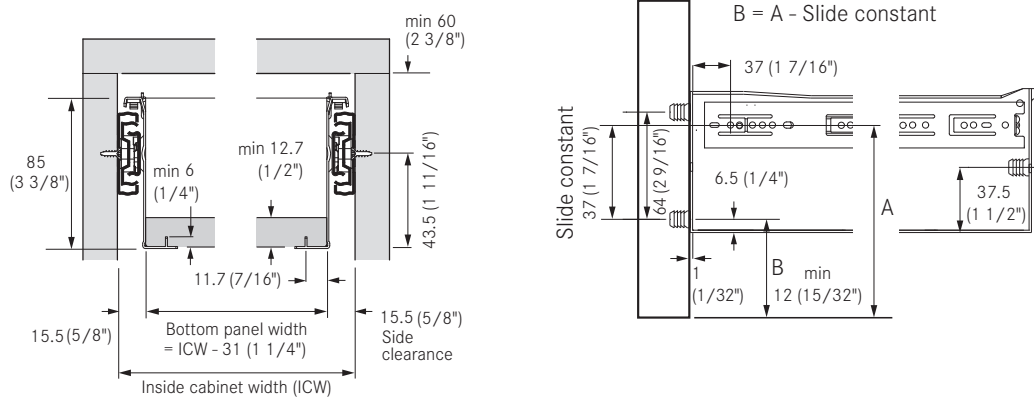


PU – Packaging unit

## Drawer Back and Bottom Measurements



## Drawer Installation Measurements



## Face Frame Installation

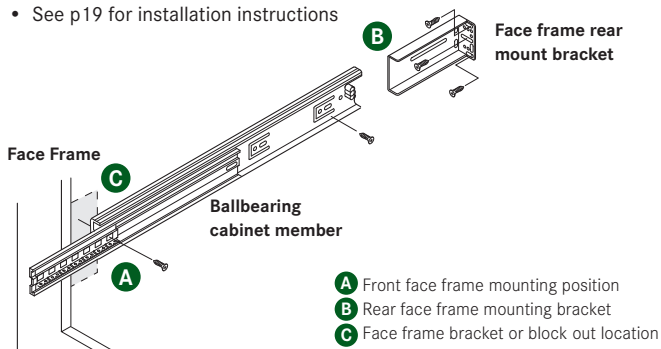
For Face Frame Cabinetry Use:

### Back

- Attach face frame rear mounting brackets (Item # 30102-15) to slide

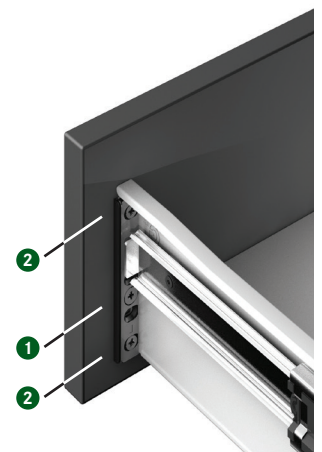
### Front - Setback=37mm

- Use Inset bracket (Item # 13901-37) or
- Block out the face frame
- See p19 for installation instructions

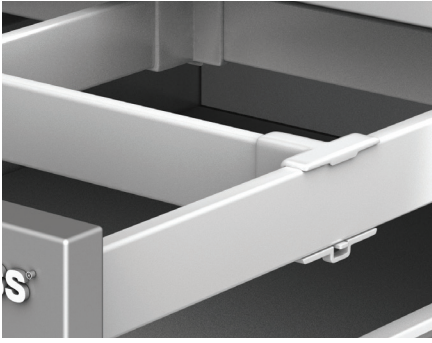


## Adjustment Features 6023

- 1 Height Adjustment:**  
 Loosen screws 2 slightly  
 Adjust screw 1 (adjustment ±2mm).  
 Tighten screws 2.
- 2 Side Adjustment:**  
 Loosen screws 2 slightly.  
 Adjust front to required position (adjustment range ±1.5mm).  
 Tighten screws 2.

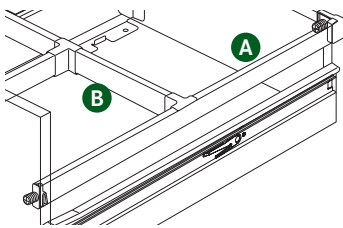


# 6100 Railing System



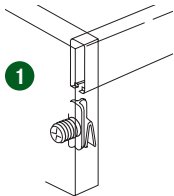
- Designed for use with Systems 6023, 6223, and 6423
- Easy to construct
- Allows end user to customize storage space
- Includes convenient rail dividers
- Available in white

## 6100 Railing System

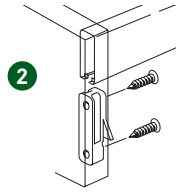


Description	Slide Length	Item No.	PU
<b>A</b> 6100-02 Side Railing 345 (13 9/16")	350 (13 3/4")	<b>F085098128211</b>	20
6100-02 Side Railing 395 (15 9/16")	400 (15 3/4")	<b>F085096773211</b>	20
6100-02 Side Railing 465 (18 5/16")	470 (18 1/2")	<b>F085096775211</b>	20
6100-02 Side Railing 505 (20")	510 (20 1/16")	<b>F085096776211</b>	20
6100-02 Side Railing 545 (21 3/8")	550 (21 5/8")	<b>F085097210211</b>	20
<b>B</b> 6100-02 Divider Railing - cut to size	Railing length 1000 (39 3/8")	<b>F085096783211</b>	20

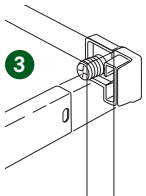
Front railing clip  
Dowelled



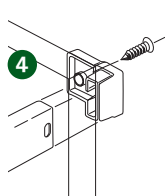
Front partition clip  
Screw-on



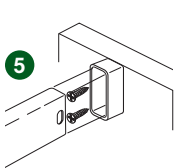
Back railing clip  
Dowelled



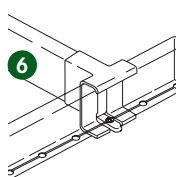
Back railing clip  
Screw-on



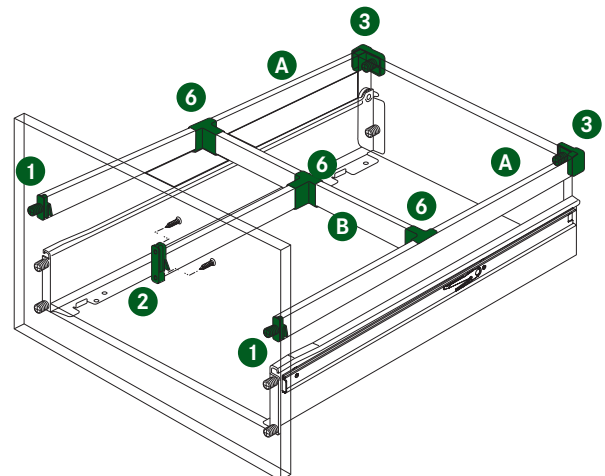
Back partition clip  
Screw-on



Divider railing clip  
Screw-on



Description	Item No.	PU
<b>1</b> 6150-01 Front railing clip, dowelled	<b>F145096360111</b>	20
<b>2</b> 6150-HF Front partition clip, 4.2mm screw-on	<b>F145098829111</b>	20
<b>3</b> 6150-02 Back railing clip, dowelled	<b>F145096719123</b>	100
<b>4</b> 6150-03 Back railing clip, 4.2mm screw-on	<b>F145096769111</b>	20
<b>5</b> 6150-20 Back partition clip, 4.2mm screw-on	<b>F145097480111</b>	20
<b>6</b> 6180-01 Divider railing clip	<b>F145096770111</b>	20



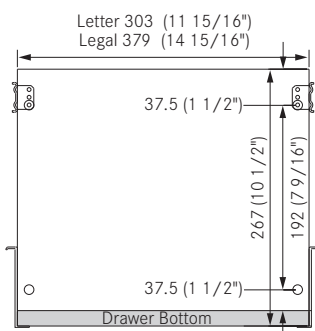
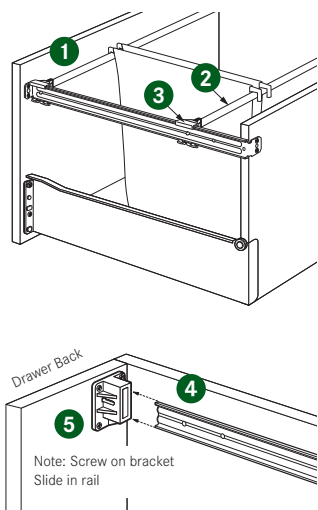
PU - Packaging unit





- Designed for use with metal drawer system or wood drawer application
- File bar accommodates lateral file application
- Easy to construct
- Available in white finish

### US File Rail



Description	Slide Length	Item No.	PU
1 US/468.5 Side Rail	470 (18 1/2")	01692-05	20
US/508.5 Side Rail	510 (20 1/16")	01690-05	20
US/548.5 Side Rail	550 (21 5/8")	01686-05	20
2 711 (28") File Bar		30890-05	20
3 Lateral File Clip		30954-39	20
4 US/442.5 Partition Rail	470 (18 1/2")	01693-05	20
US/482.5 Partition Rail	510 (20 1/16")	01691-05	20
US/522.5 Partition Rail	550 (21 5/8")	01687-05	20
5 Partition Bracket		30956-39	20

### 3595 Aluminum File Rail

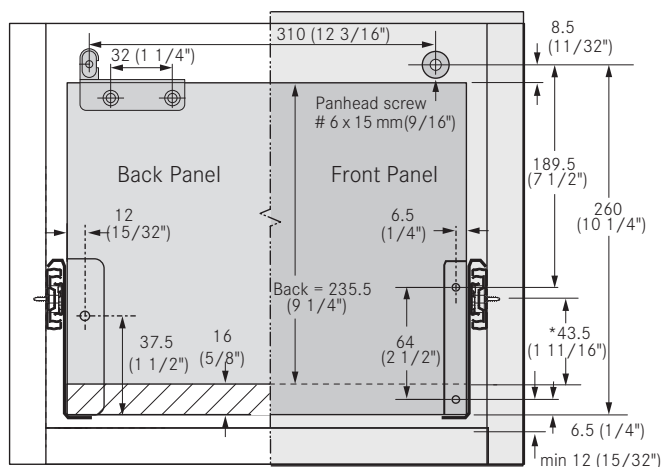


- Keep hanging files organized
- Install file railing system independent from drawer system
- Front tilt adjustment
- Oval aluminum anodized

Description	Slide Length	Item No.	PU
File Railing Set	500 (20")	<b>F084074850511</b>	20
File Railing Set	550 (22")	<b>F084074851511</b>	20
Divider Rail	1200 (47 1/4")	<b>F084074854223</b>	20
Divider Clips		<b>F084074857133</b>	20

#### File Railing set consists of:

- 2 Side gallery rails
- 2 Front fixing parts
- 2 Back fixing parts
- 2 Cover caps



\*6023 measurement used. For other drawer heights, refer to the appropriate page.

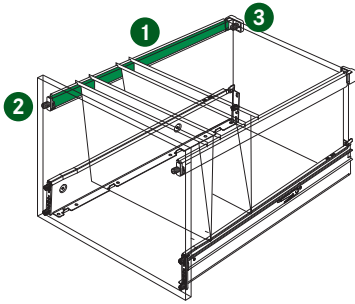
# Pendaflex

## 6110 File Railing



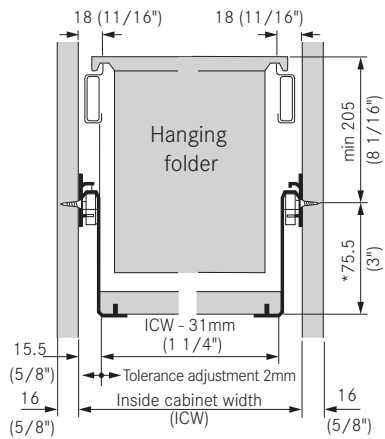
- The Pendaflex Rail 6110 provides a lip for drop in file folders. It is cut to a desired length and attached over the 6100 side railing.
- Use in conjunction with ZBox 6023 and 6223
- Easy to construct
- White plastic

### File Rail 6110



Description	Length	Item No.	PU
1 Pendaflex Rail 6110	1100 (43 5/16")	F145099062211	20
2 Front railing clip, doweled, white		F145096360111	100
3 Back railing clip, doweled, white		F145096719123	100

### Drawer Installation Measurements



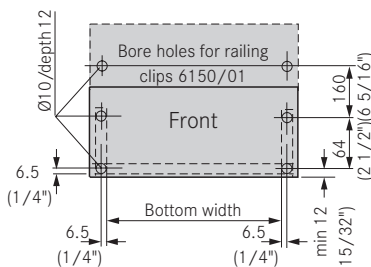
\*6036 measurement used.  
For other drawer heights, refer to the appropriate page.

### Inside Cabinet Width

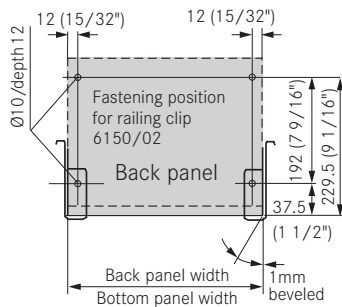
ICW = Inside Cabinet Width  
Legal Size paper:  
ICW = 418mm (16 7/16")  
Letter size Paper:  
ICW = 342mm (13 7/16")

### Drilling Patterns for Pendaflex File Drawers

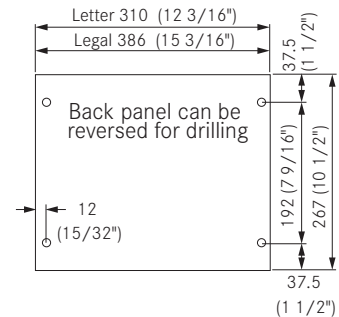
**Front panel**  
(manual and automatic assembly)



**Back panel**  
(automatic assembly)



**Back panel**  
(manual assembly)



PU - Packaging unit

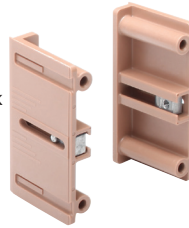
## ZBox

### Inset Bracket Set



For ZBox face frame application, the inset bracket provides a simple solution to attach the cabinet member to the face frame without having to block out the cabinet.

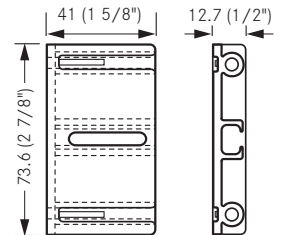
- Bracket mounts behind the face frame, minimum 12.7mm (1/2") frame required
- Includes guide markings for proper setback of 37mm



Description	Item No.	PU
Inset bracket set	13901-37	1
Inset bracket set	13901-08	50

#### Polybag set consists of:

- 2 - Universal Inset Bracket ABS Brown
- 2 - 8 X 32 Tapped Insert for Inset bracket
- 4 - #7 X 2" mounting screws
- 2 - #8 - 32 X 1/2" Machine Screw FHP
- 1 - Instructions



### Door Protectors for Pull-outs

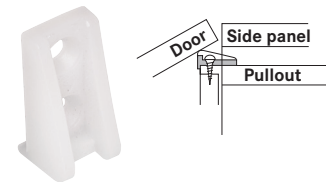


Protects door when insets are pulled out. Attached to the bottom of the pull-out.



Description	Item No.	PU
6197 Protector, left	<b>F145088094</b> 223	100
6197 Protector, right	<b>F145088095</b> 223	100

### Door/Drawer Protector



Attaches to side of wooden pull-out. Designed for inset pull-out trays for frame or frameless cabinetry.

Description	Item No.	PU
Door/drawer protector	13096-43	500

### Central Locking Device



Use with most commercial gang lock system. Provides necessary match for gang lock pins to engage

Description	Item No.	PU
Central locking	<b>F145088123</b> 238	300

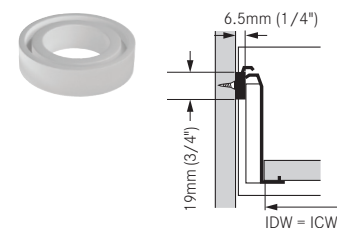
### 6036 Support Bracket



Attaches to the center of wide drawers for support. Elongated holes for drawer front adjustments

Description	Item No.	PU
Bracket, nickel	22226-42	100

### 6036 Spacer for Inset Drawers



Description	Item No.	PU
6036 Spacer	00035-42	100

# Machinery

## Grass PRO1 and ZRam for Zargen and ZBox Assembly

### Grass PRO1 for Zargen and ZBox



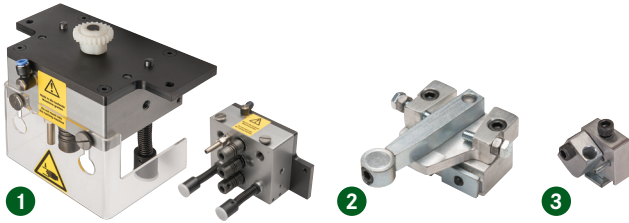
- Depth stop can be adjusted to material thickness
- Functional design
- Easy, fast and efficient operation
- Easy maintenance
- 3 spindle gear box

Description	Item No.	PU
220v single phase pneumatic	80131	1
220v three phase pneumatic	80132	1
110v single phase pneumatic	80068	1



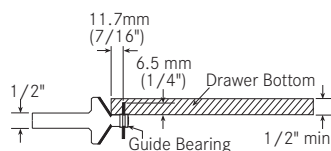
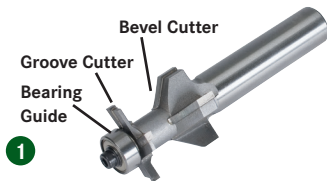
Description	Item No.	PU
Extension fence 300mm to 1250mm	88612-01	1

### Zargen and ZBox Conversion Kit



Description	Item No.	PU
1 PRO1 Gear box	80151	1
2 PRO1 Side-to-side Stop	80153	1
3 PRO1 13mm Fence Stop	80152	1
4 PRO1 Kit (gear box, fence and side stops)	80154	1

### Bits



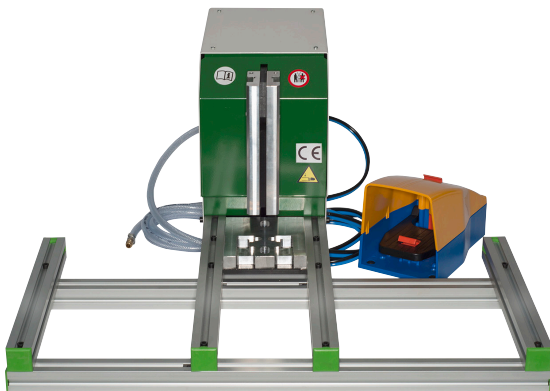
This bit is designed for grooving and beveling the drawer bottoms for the lipped version of the ZBox and Zargen drawer slide. The bit comes only with a 1/2" shank.



Two 00222-01 bits are needed for the Zargen and ZBox Grass PRO1 setup.

Description	Item No.	PU
1 Router bit	00197-01	1
2 10mm Carbide counter sink drill bit, LH	00222-01	1

### ZRam



- Designed for semi-automated assembly of ZBox and Zargen slides
- Operated by a foot pedal – air required
- No adjustment required when using various heights or when switching slide types
- Economical solution for drawer assembly

Description	Item No.	PU
ZRam	93250-01	1
ZRam Retrofit Kit	69401	1

PU - Packaging unit

## Assembly of ZBox

### Grass PRO 1

To assemble, drill drawer back dowel holes for each side by positioning back against the side-to-side stop.

To ensure correct positioning of the drawer front dowel holes, place drilled drawer back against right side of 13mm stop. Set floating side stop at opposite end of panel. Drill bits are countersunk to allow for easy installation of dowels.

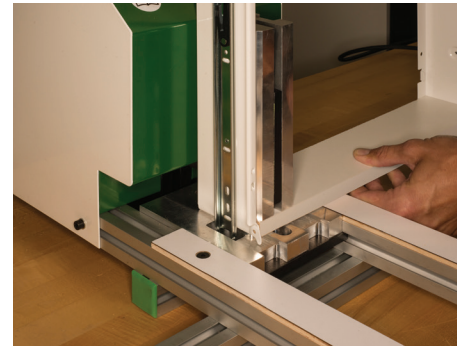
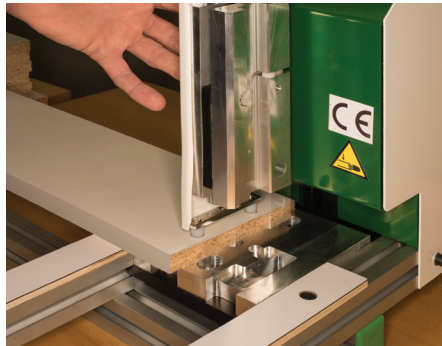
To drill right side of drawer front, place front against the 13mm stop. To drill left side, place front against floating side stop.



### ZRam

To insert the slide, position the slide against the ZRam arm and place drawer back over the dowel. Repeat for other side.

Place drawer front face down on ZRam. Position slide over dowel holes and depress foot pedal. Repeat for other side.



After assembly is complete, place ZBox drawer box on a stable surface and press bottom firmly over tabs.

Note: The assembly of the Zargen drawer system is the same process as the ZBox system.



# Notes

---

---

---

---

---

---

---

---

---

---

---

---

---

---

---

---

---

---

---

---

---

---

---

---

---

---

---

---

---

---

---



---



---



---



---



---



---



---



---



---



---



---



---



---



---



---



---



GRASS America Inc.  
1202 NC Highway 66 South  
Kernersville, NC 27284

Phone: 1-800-334-3512  
Fax: 1-800-525-8406

**Website:** [www.grassusa.com](http://www.grassusa.com)  
**E-mail:** [info@grassusa.com](mailto:info@grassusa.com)

GRASS Canada Inc.  
10 Newgale Gate, Unit 7  
Toronto, ON M1X 1C5

Phone: 1-800-461-4975  
Fax: 1-416-335-5907

**Internet:** [www.grasscanada.com](http://www.grasscanada.com)  
**E-Mail:** [info@grasscanada.com](mailto:info@grasscanada.com)



[www.grassusa.com](http://www.grassusa.com)